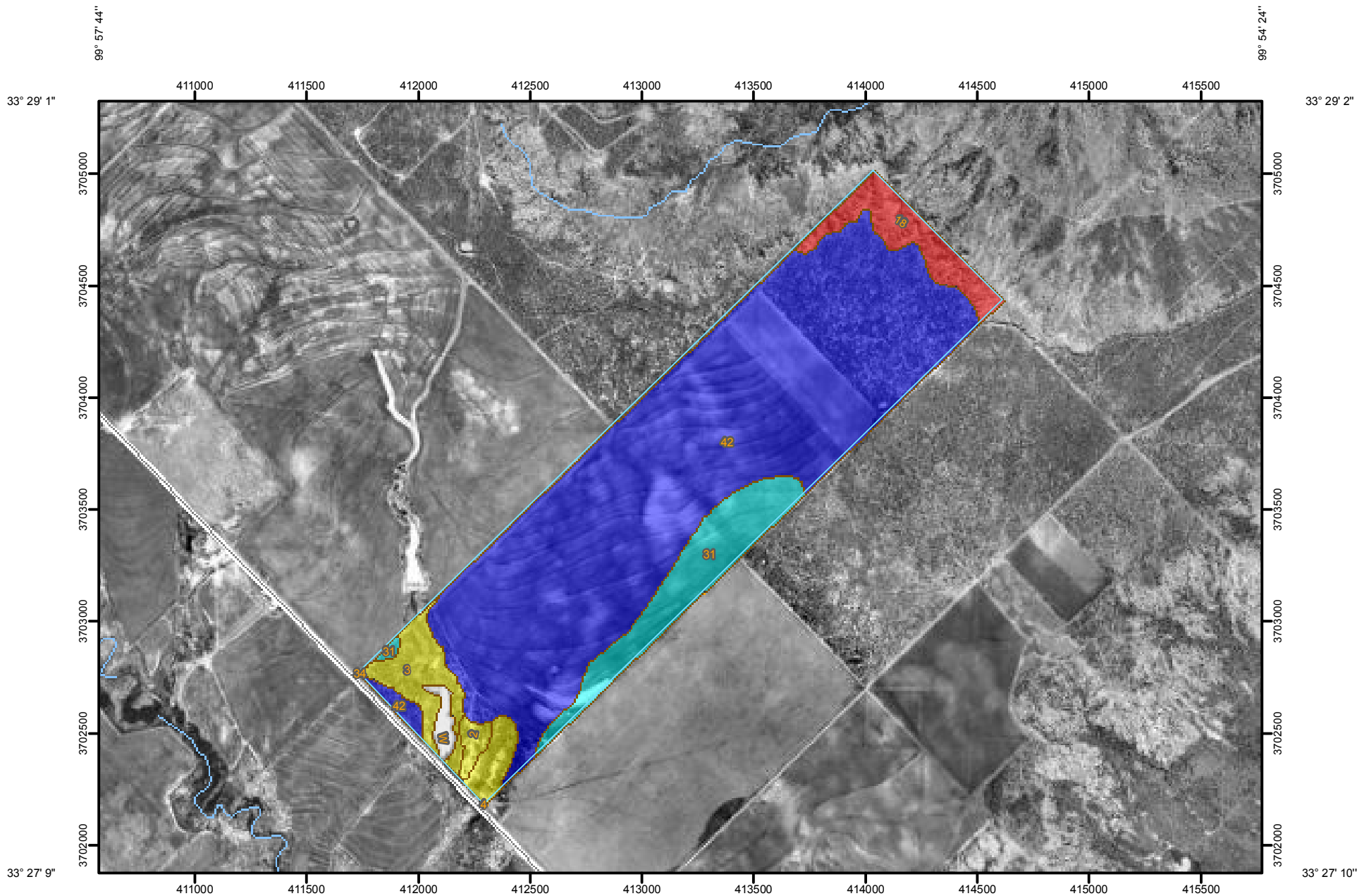


Range Production (Normal Year)—Knox County, Texas



99° 57' 43\"/>




Map Scale: 1:24,700 if printed on A size (8.5" x 11") sheet.



99° 54' 23\"/>

MAP LEGEND

Area of Interest (AOI)

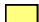
 Area of Interest (AOI)


Soils


 Soil Map Units

Soil Ratings

 <= 500

 > 500 AND <= 1700

 > 1700 AND <= 2000

 > 2000 AND <= 2500

 Not rated or not available

Political Features

 Cities

Water Features

 Oceans

 Streams and Canals


Transportation

 Rails

 Interstate Highways

 US Routes

 Major Roads

 Local Roads

MAP INFORMATION

Map Scale: 1:24,700 if printed on A size (8.5" × 11") sheet.

The soil surveys that comprise your AOI were mapped at 1:24,000.

Please rely on the bar scale on each map sheet for accurate map measurements.

Source of Map: Natural Resources Conservation Service
Web Soil Survey URL: <http://websoilsurvey.nrcs.usda.gov>
Coordinate System: UTM Zone 14N NAD83

This product is generated from the USDA-NRCS certified data as of the version date(s) listed below.

Soil Survey Area: Knox County, Texas
Survey Area Data: Version 8, Oct 27, 2009

Date(s) aerial images were photographed: 1995

The orthophoto or other base map on which the soil lines were compiled and digitized probably differs from the background imagery displayed on these maps. As a result, some minor shifting of map unit boundaries may be evident.

Range Production (Normal Year)

Range Production (Normal Year)— Summary by Map Unit — Knox County, Texas				
Map unit symbol	Map unit name	Rating (pounds per acre per year)	Acres in AOI	Percent of AOI
2	Aspermont silty clay loam, 1 to 3 percent slopes	1700	6.0	0.9%
3	Aspermont silty clay loam, 3 to 5 percent slopes	1700	40.4	6.2%
4	Aspermont silty clay loam, 5 to 12 percent slopes	1700	0.0	0.0%
18	Knoco-Badland association, undulating	500	35.4	5.4%
31	Sagerton clay loam, 0 to 1 percent slopes	2000	62.0	9.5%
34	Tillman clay loam, 0 to 1 percent slopes	1700	0.0	0.0%
42	Wichita clay loam, 0 to 1 percent slopes	2500	500.3	76.9%
W	Water greater than 40 acres in size		6.3	1.0%
Totals for Area of Interest			650.6	100.0%

Description

Total range production is the amount of vegetation that can be expected to grow annually in a well managed area that is supporting the potential natural plant community. It includes all vegetation, whether or not it is palatable to grazing animals. It includes the current year's growth of leaves, twigs, and fruits of woody plants. It does not include the increase in stem diameter of trees and shrubs. It is expressed in pounds per acre of air-dry vegetation. In a normal year, growing conditions are about average. Yields are adjusted to a common percent of air-dry moisture content.

In areas that have similar climate and topography, differences in the kind and amount of vegetation produced on rangeland are closely related to the kind of soil. Effective management is based on the relationship between the soils and vegetation and water.

Rating Options

Units of Measure: pounds per acre per year

Aggregation Method: Weighted Average

Component Percent Cutoff: None Specified

Tie-break Rule: Higher

Interpret Nulls as Zero: Yes